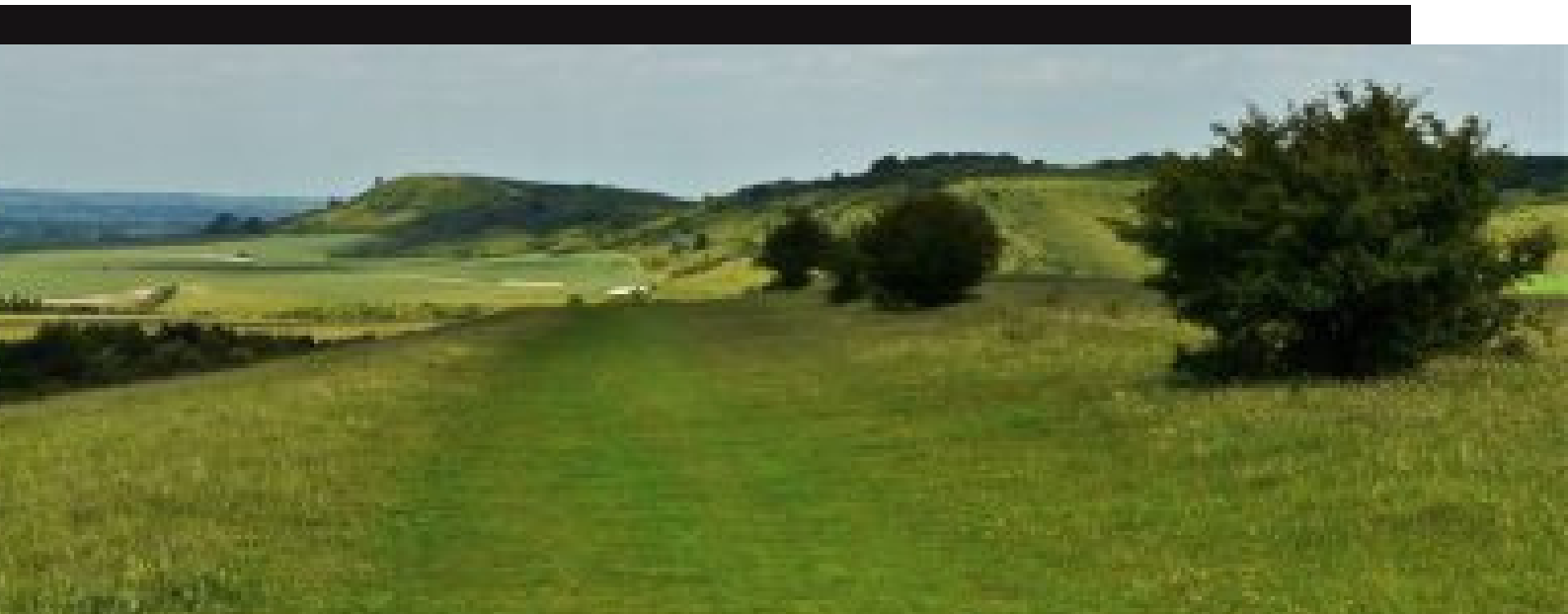


IVINGHOE & ASHRIDGE

12TH JULY
10:30AM – 3:00PM



- Walk Name:** Ivinghoe & Ashridge Circular
- Meet Point:** Ivinghoe Beacon National Trust car park
(nearest postcode – LU6 2EG and What3Words link
<https://w3w.co/harshest.pack.grand>)
- Route Info:** Approx. 8 miles and 4hrs with a lunch break including Ivinghoe Beacon, Stocks golf course, Aldbury village and Ashridge Woods and then back to the car park. 950ft of elevation in total, mainly on good paths and grass.
- Refreshments:** Bring food & drinks with you.
- Clothing & Footwear:** Hiking boots or trail shoes, comfortable layered clothing.